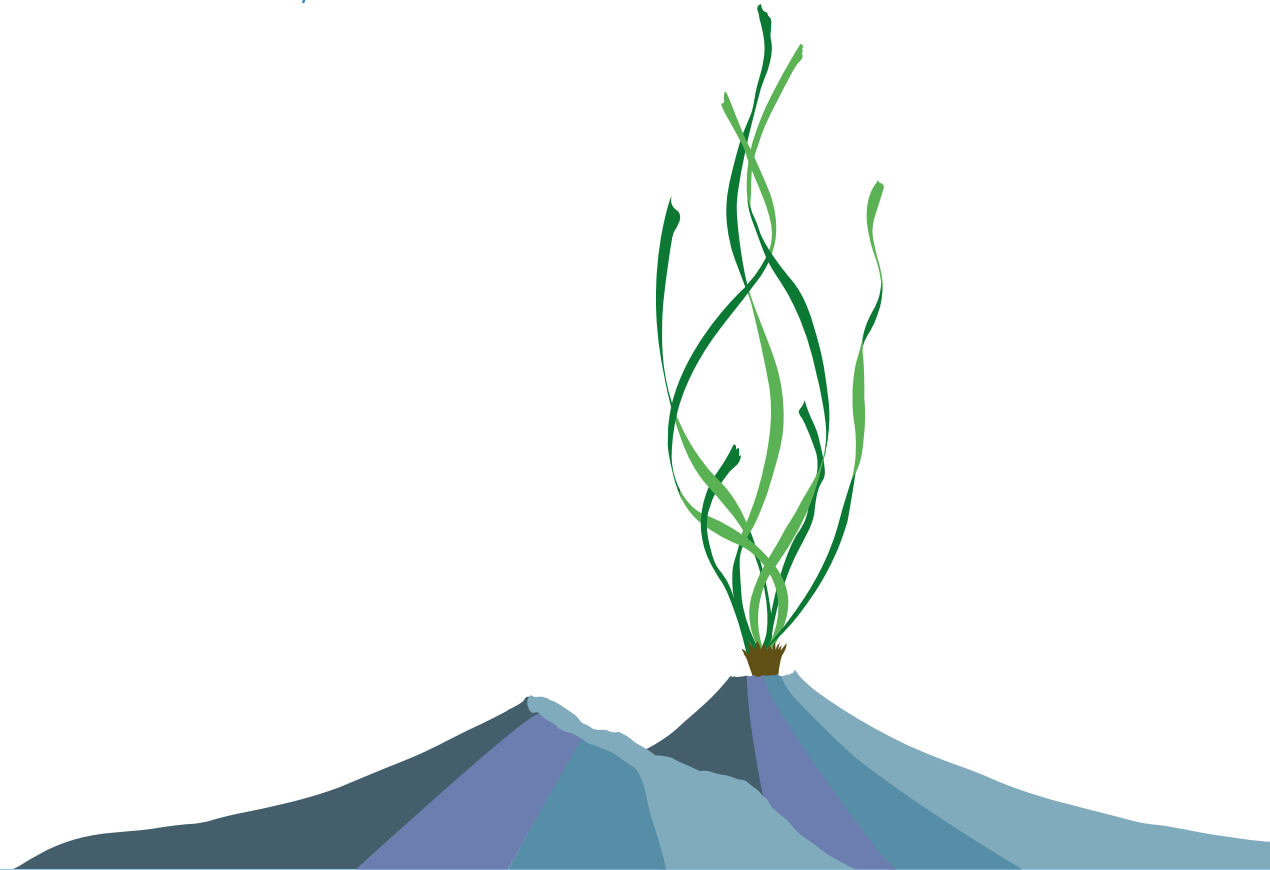




ISBW15 & WSC2024

NAPOLI, ITALY, JUNE 17TH TO JUNE 21ST, 2024

poster



DAY 1 - 17 June 2024

DAY 1	SS05	P161	J. Adams	Multiple pressures, responses and restoration of the endangered seagrass <i>Zostera capensis</i>
DAY 1	SS05	P163	J. Arnull	Seagrass grows faster with experimental nitrogen enrichment in the Maldives, but sensitivity influenced by contextual disturbance
DAY 1	SS05	P172	N. Baux	Benthic environment analysis in contrasted <i>Zostera noltei</i> meadows: from native to newly-colonized areas, Normandy (France)
DAY 1	SS05	P148	A. Bijak	Seagrass species richness and identity influence annual seagrass cover, but changes in species composition drive meadow stability
DAY 1	SS05	P182	B. Classen	Sugar and salt: How seagrass cell walls adapted to the marine habitat
DAY 1	SS05	P153	D. Cottrell	Herbivory-induced facilitation increases from low to high stress: a paired observational and experimental test in <i>Zostera marina</i> beds
DAY 1	SS05	P184	E. Dattolo	Weighted gene co-expression network analysis identifies molecular pathways and hub genes involved in the acclimation strategies of <i>Cymodocea nodosa</i> exposed to single and multiple factors
DAY 1	SS05	P171	M. de la Torre-Castro	The Blue Economy and Seagrass Ecosystems in the Western Indian Ocean (WIO)
DAY 1	SS05	P155	F. Dokoza	Long term seagrass meadow monitoring in the protected areas of the Adriatic Sea
DAY 1	SS05	P193	M. Garcia-Sanchez	Impact of repeated disturbances on <i>Thalassia testudinum</i> meadows by sargassum brown tides in the Mexican Caribbean
DAY 1	SS05	P173	O. Graham	Force of infection highlights rapid disease transmission in a natural eelgrass (<i>Zostera marina</i>) meadow
DAY 1	SS05	P187	G. Hattich	Thermal mosaics and seagrass resilience: A comprehensive exploration on a small spatial scale
DAY 1	SS05	P178	T. Moir	Effects of decadal long sub-lethal temperature increases on <i>Zostera muelleri</i> resilience to future stress events
DAY 1	SS05	P183	C. Premarathne	Impacts of Heat Stress on gross primary production of Small-Bodied Seagrass <i>H. ovalis</i>
DAY 1	SS05	P186	F. Palacio	Ecological risks of 48 trace elements detected in sediments and <i>Thalassia testudinum</i> from the Bay of Cartagena and in the Corales del Rosario National Park, Colombia
DAY 1	SS05	P179	T. Sintes	Population dynamics and competition in seagrass meadows
DAY 1	SS05	P151	A.M. Souza (da Costa de)	Microplastic in tropical estuarine seagrass meadows: does seagrass size matter?
DAY 1	SS05	P167	M. Vivanco Bercovich	Ecophysiological responses of the surfgrasses <i>Phyllospadix scouleri</i> to marine heat waves in Baja California, Mexico
DAY 1	SS15	P592	M. Asmul	Investigating shifts in faunal communities in Norwegian Skagerrak eelgrass meadows
DAY 1	SS15	P585	J. Billingham	The Meadow-Scale Trophic Effects of Detrital Kelp as a Spatial Subsidy to Seagrass-Inhabiting Mesograzers

DAY 1	SS15	P575	O. Bolivar	Preliminary estimation of blue carbon associated with seagrass meadows in the insular and coastal territory of Venezuela
DAY 1	SS15	P565	O. Breitzkreutz	Dynamics and drivers of eelgrass seed-based recovery potential along an estuarine gradient
DAY 1	SS15	P570	M. Camacho	Comparing two approaches for the quantitative assessment of blue crab commercial fishery enhancement by restored eelgrass meadows in the eastern shore of Virginia
DAY 1	SS15	P568	L. Capasso	Potential loss of ecosystem services due to the removal of <i>Posidonia oceanica</i> banquettes
DAY 1	SS15	P563	J. Creed	A synthesis of provision and impact in seagrass ecosystem services in the Brazilian Southwest Atlantic
DAY 1	SS15	P604	T. Engelbrecht	Blue carbon across the riverbank: Assessing carbon storage of seagrass and saltmarsh habitats in a South African Estuary
DAY 1	SS15	P601	S. Forsberg	Carbon source matters: Species-specific methane production in anoxic seagrass sediments on the Swedish west coast
DAY 1	SS15	P591	M. Fouet	Modelling the colonisation of a non-indigenous mussel in seagrass meadows: the case of Arcachon bay, France.
DAY 1	SS15	P554	C. Galvan	Discovering the patterns of seagrass-associated infaunal biodiversity at multiple spatial scales
DAY 1	SS15	P564	J. Mnez Crespo	Characterizing the retention capacity of microplastics in a seagrass meadow as a function of hydrodynamics and shoot density
DAY 1	SS15	P602	S. Mazzuca	Exploring the function of dimethylsulfoxide (DMSO) in <i>Posidonia oceanica</i> : phenological, biochemical, and molecular investigations through a dose-response assay
DAY 1	SS15	P180	A. Mittermayr	Re-casting the SeagrassNet
DAY 1	SS15	P587	K.K. Mueller	Human Galectins and Plant Galactans: Will <i>Zostera</i> find its way into tumor therapy?
DAY 1	SS15	P582	G. Naccarato	Investigation of epiphyte assemblages on <i>Posidonia oceanica</i> leaves in potentially disturbed and control areas, Lipsi Island, Aegean Sea
DAY 1	SS15	P561	I. Olive	Human-nature relations as pathways for connecting people and seagrasses
DAY 1	SS15	P608	J.M. O'Neill	Nutrient dynamics in aquatic grass beds in Chesapeake Bay, USA
DAY 1	SS15	P580	E. Ortiz	Environmental conditions of the seagrass areas of the protected natural landscape Rincon de Guanabo, Cuba
DAY 1	SS15	P596	N. Pineiro-Juncal	Orienting young scientists of euromarine (OYSTER). Opportunities for early career researchers in marine sciences
DAY 1	SS15	P562	J. Roth	Potentially Disturbed and Control Areas, Lipsi Island, Aegean Sea
DAY 1	SS15	P594	M. Ward	Do some seagrass nature-based solutions approaches lead to greater carbon sequestration than others?
DAY 1	SS11	P33	J. Bernardeau Esteller	Trends and interannual variations of <i>Posidonia oceanica</i> structural descriptors in southeast Spain: are global variables major drivers?
DAY 1	SS11	P330	A. Cameron	Advancing subtidal seagrass mapping methods for monitoring restoration

DAY 1	SS11	P356	S. Haro	Assessing Spatio-Temporal Dynamics of <i>Nanozostera noltei</i> in Irish Intertidal Zones using Remote Sensing technologies: Implications for Restoration
DAY 1	SS11	P374	P.-J. Liu	The influencing factors of seagrass distribution in Dongsha Atoll
DAY 1	SS11	P372	P.-L. Lu	Assessment of the Carbon Budget of Seagrasses in a Low-Utilization Fishing Port
DAY 1	SS11	P349	L. Manfra	The plastic pollution on seagrasses worldwide: current state of knowledge
DAY 1	SS11	P333	C. Micheli	Maps of <i>Posidonia oceanica</i> meadows as indicators in environmental impact assessment
DAY 1	SS11	P357	S. Oiry	Discriminating Seagrass From Green Macroalgae in European Intertidal Areas using High Resolution Multispectral Drone Imagery
DAY 1	SS11	P367	G. Procaccini	The Lacco Ameno (Ischia, Gulf of Napoli) <i>Posidonia oceanica</i> long-term: learning from the past, calling to the future
DAY 1	SS11	P334	C. Webster	Multi-scale monitoring indicates impacts of low light from dredging on <i>Posidonia sinuosa</i> are not worsened by short-term heat wave
DAY 1	SS11	P375	P. Wicaksono	Indonesia seagrass mapping initiative: lesson learned

DAY 2 - 18 June 2024

DAY 2	SS02	P66	H. Alzubaidy	Nested interactions in seagrass holobionts:
DAY 2	SS02	P41	C. Collier	Large scale approaches to seagrass ecology: integrating diverse approaches to produce a global view of seagrass ecosystems
DAY 2	SS02	P71	A. Cozzolino	A bioinformatics approach to unravel CIS-elements regulation of circadian timekeeping in marine angiosperms
DAY 2	SS02	P65	A. Hall	<i>Zostera marina</i> seed morphology and germination across latitudes
DAY 2	SS02	P74	X. Huang	Tropical seagrass bed food web identification using triple stable isotopes and fatty acid signatures
DAY 2	SS02	P70	S. Kali	Flore associée aux herbiers de Posidonie de la côte Algérienne.
DAY 2	SS02	P69	J. Lee	Habitat structural complexity drives fish recruitment enhancement in submerged aquatic vegetation: a meta-analysis
DAY 2	SS02	P67	H. Lyford	Synthesizing research trends for the <i>Zostera</i> genus: a global systematic review of seagrass stressors, response variables, and study design
DAY 2	SS02	P40	C. Pavone	Topic modelling analyses on seagrass ecological science: temporal trends, connectedness of recurrent themes and perspectives for future research
DAY 2	SS04	P136	L. Alma	Broad-scale genetic diversity and biogeography of Seagrass Wasting Disease
DAY 2	SS04	P605	S. Lai	High clonality in urban <i>Thalassia hemprichii</i> seagrass meadows

DAY 2	SS04	P145	E. Larkin	Changes in halodule wrightii genotypic diversity over a six-year time span (2017-23)
DAY 2	SS07	P249	C. Cara	Impacts of salinity and epiphyte cover on light absorption and photosynthetic properties of <i>Zostera marina</i> meadows in western Ireland
DAY 2	SS07	P235	M.J. Díaz	Beyond brine: Unravelling the legacy of brine discharge on the life history traits of seagrass communities
DAY 2	SS07	P254	M. Duverger	2D imaging combination of planar optode and DET 2D: application in <i>Zostera marina</i> seagrass
DAY 2	SS07	P247	A. Le Vilain	Tipping the balance: Global Change Stressors impact carbon dynamics in seagrass (<i>Posidonia oceanica</i>) ecosystems
DAY 2	SS07	P255	M. Lorenti	Exploring the functional diversity of <i>Posidonia oceanica</i> isopods: traits that matter
DAY 2	SS07	P606	T. Mollerraid	Update on the co-occurrence patterns of angiosperms and charophytes in the northern Baltic Sea
DAY 2	SS07	P250	D. Ng	Seawater microbiome in seagrass meadows: Patterns of pathogen prevalence
DAY 2	SS07	P228	I. Perez Espinosa	Spatial and temporal models of functional bioconnectivity of fishes with seascape suitability near the mangrove in "Los Petenes" Biosphere Reserve, Campeche, México
DAY 2	SS07	P611	G. Samperio-Ramos	Ammonium loss microbiologically mediated by Fe (III) and Mn (IV) reduction along a coastal lagoon system dominated by seagrasses
DAY 2	SS08	P276	J. Hart	Disentangling the effect of the whole rhizosphere microbiome on seagrass species interactions and performance
DAY 2	SS09	P280	F. Blanco Murillo	Unravelling <i>Posidonia oceanica</i> sensitivity to desalination brine discharges: the role of shoot apical meristems
DAY 2	SS09	P279	E. Marquis	Indoor cultivation of the Arabian Gulf's seagrass species in controlled aquaponic systems
DAY 2	SS09	P292	S. Rivaes	Could <i>Zostera marina</i> be the new cereal for the future? Previous results and future perspectives
DAY 2	SS12	P397	N. Abdelkader	An ecological method using palm tree for <i>Posidonia oceanica</i> restoration in Kerkennah Archipelago, South Tunisia
DAY 2	SS12	P411	J.E. Argente García	Smart MPA, an ICT tool to facilitate the management and governance of <i>Posidonia oceanica</i> in Marine Protected Areas
DAY 2	SS12	P406	A. Alemany Moreno	Bridging dimensions for holistic water quality evaluation: Integrating physiological, ecological, and socio-ecological metrics in the Ebro Delta coastal ecosystems based on the seagrass <i>Cymodocea nodosa</i>
DAY 2	SS12	P393	L. Boudaya	Engaging stakeholders in co-design and implementation of Nature-Based Coastal Protection in Tunisia - A case study from ORIENTATE Project
DAY 2	SS12	P414	S. Bussotti	The Sunrise project and the public perception of the seagrass <i>Posidonia oceanica</i>
DAY 2	SS12	P413	L. Hanssen	Caribbean island under sargassum landings - Early stakeholder involvement using Group Model Building to identify ecological research questions and nature management options

DAY 2	SS12	P394	L. Meysick	Seagrasses as nature-based solution for watershed pollution in Zanzibar, Tanzania: First insights from the SOMWAT project
DAY 2	SS12	P410	J.A. Mortimer	Formalizing Creole Names for Seagrasses in Seychelles: adding value to a resource
DAY 2	SS12	P383	A.N. Mumo	Community-Led Seagrass Conservation and Blue Carbon Financing
DAY 2	SS12	P403	S. Udagedara	Blue carbon stock of tropical seagrass on the Northwest coast of Sri Lanka
DAY 2	SS13	P612	J. Chan	Very High-Resolution Mapping of Coastal Nature-based Climate Solution: A case study seagrass site from Singapore

DAY 3 - 19 June 2024

DAY 3	SS01	P8	D. Hanuise	Informing the recovery and restoration of tropical seagrasses using a biophysical modelling approach
DAY 3	SS01	P37	W.-J. Lin	Evaluation of decadal predictability of seagrass growth over southern Taiwan
DAY 3	SS01	P15	I. Mancini	Inconsistent change in ecological status of urban seagrass meadows 18 years apart
DAY 3	SS01	P16	J. Severinsson	Contrasting epifauna and oxygen dynamics in seagrass and perennial algal mats along the Swedish west coast
DAY 3	SS01	P31	C. L. Wathne	Maximising research impacts and bridging gaps through the Norwegian Blue Forests Network
DAY 3	SS06	P218	S. Cahill	Evaluating the ability of seagrass <i>Posidonia oceanica</i> to locally mitigate the effects of ocean acidification: insights from a mesocosms experiment
DAY 3	SS06	P208	M.C. Gambi	Status of <i>Posidonia oceanica</i> beds in the marine protected area off Ischia, Procida and Vivara (Gulf of Naples, Italy): historical data and recent monitoring
DAY 3	SS06	P212	S. Merolla	Effects of seagrass (<i>Zostera marina</i>) on oyster (<i>Crassostrea gigas</i>) calcification in ambient and ocean acidification conditions
DAY 3	SS06	P216	R. Zakhama-Sraieb	Preliminary assessment of soil organic carbon stocks in seagrass meadows of Kerkennah Archipelago, Tunisia: implications for blue carbon storage and climate change mitigation
DAY 3	SS03	P119	L.S. Alloway	Quantifying the blue carbon potential of Ireland's seagrass meadows along environmental gradients at local scale
DAY 3	SS03	P111	C.B. de los Santos	SeagrassTraitDB: the global database of curated seagrass traits
DAY 3	SS03	P113	E. Gomis	Escarpmnts within Mediterranean seagrass <i>Posidonia oceanica</i> meadows enhance habitat structural complexity and fish diversity and biomass

DAY 3	SS03	P76	A. Ibrahim	Exploring root systems: root traits of <i>Halophila ovalis</i> in varying below-ground environments
DAY 3	SS03	P79	C. Marco-Mendez	Impact of Storm Gloria on carbon storage in <i>Posidonia oceanica</i> meadows
DAY 3	SS03	P112	C. Nozais	Summertime dynamics of eelgrass (<i>Zostera marina</i>), from meadow-scale to tissue-scale in the St-Lawrence Estuary
DAY 3	SS03	P125	S. Oliva	Seagrass meadows contribution to local fisheries: the role of epigeal structural complexity and economic valuation
DAY 3	SS03	P91	L. Rabaoui	Comprehensive Assessment of Seagrass Ecosystems along the Saudi Arabian Coast of the Red Sea: Implications for Conservation and Management
DAY 3	SS03	P86	I. Rojo	Reference models for the ecological evaluation of <i>Posidonia oceanica</i> meadows along the Spanish Mediterranean coastal waters
DAY 3	SS03	P89	J.M. Sandoval Gil	Eelgrass (<i>Zostera marina</i> L.) potential as a natural biofilter for Oyster aquaculture
DAY 3	SS03	P90	K. Sugimoto	Changes in seagrass distribution and carbon contents in seagrass and sediment in Hiroshima Bay
DAY 3	SS03	P124	S. Thom	Unveiling the carbon stock potential of UK seagrass meadows
DAY 3	SS03	P100	O. Thomas	Expansion of temperate intertidal seagrass meadows without intervention: what are the blue carbon ramifications?
DAY 3	SS03	P106	T.N.A. TKA	Where the Seagrass Grows: A Study of Key Drivers for Southeast Asian Seagrass Distribution
DAY 3	SS03	P118	J. Wirries	The seagrass <i>Zostera marina</i> takes a deep breath when exposed to a heat wave
DAY 3	SS10	P310	M. Amone-Mabuto	Sentinel-2 and Unmanned Aerial Vehicles (UAVs) for mapping seagrass habitats in Southern Mozambique
DAY 3	SS10	P319	A. Bernard	Mapping <i>Stuckenia pectinata</i> distribution in Lagoonal Ecosystems: Assessing Seasonal Trends, Abiotic Correlations, and Spatial Patterns
DAY 3	SS10	P307	J. Boyle	Transdisciplinary seagrass mapping towards place-based restoration planning in Sanday, Orkney, Scotland
DAY 3	SS10	P312	M. Borrelli	Rapid And Broad Area Detection, Classification and Localization of Seagrasses in Very Shallow Waters Using a Phase-Measuring Side-scan Sonar
DAY 3	SS10	P314	P. Gernez	Multi- and hyperspectral classification of intertidal vegetation using a spectral library for coastal biodiversity remote sensing
DAY 3	SS10	P326	S. Ichiki	Seagrass mapping using 3D sensing and underwater drones: A case study for a giant <i>Zostera asiatica</i> in eastern Hokkaido, Japan
DAY 3	SS10	P299	C.B. Lee	Mapping the national seagrass extent of Venezuela
DAY 3	SS10	P322	B. Legare	Estimation of eelgrass above-ground carbon from remote sensing multispectral imagery along the coast of the Estuary and Gulf of St. Lawrence
DAY 3	SS10	P324	J. Lidgley	Advanced Seagrass Mapping for Restoration and Blue Carbon Assessment: The Plastic-initiative
DAY 3	SS10	P298	A. Oprandi	Estimating change in seagrass meadows: the value of old maps

DAY 3	SS10	P321	B. Scheelk	Co-development of a regional roadmap for the management, conservation, restoration, and monitoring of coastal wetlands including seagrasses in the Mesoamerican Reef Region
DAY 3	SS10	P302	E. Schutt	How to combine spatial and spectral details: Satellite-based Seagrass Mapping at Sub-Meter Scale
DAY 3	SS10	P304	G. Terauchi	Mapping seagrass blue carbon potential using Seagrass Mapper
DAY 3	SS14	P511	F. Badalamenti	<i>Posidonia oceanica</i> (L.) seedlings from beach-cast fruits to restore small anchoring damage to meadows
DAY 3	SS14	P539	T. Bakran-Petricoli	Extreme storms as a challenge in seagrass restoration
DAY 3	SS14	P446	C. Bertelli	ReSOW – Restoring Seagrass for Ocean Wealth
DAY 3	SS14	P526	L. Bruil	Advancing Dwarf eelgrass (<i>Zostera noltii</i>) restoration methods
DAY 3	SS14	P533	R. Cammenga	Challenges for subtidal eelgrass restoration in the Dutch Wadden Sea
DAY 3	SS14	P477	L. Coals	Learning from setbacks and successes in seagrass restoration
DAY 3	SS14	P607	M. Cognat	Mitigate hydrodynamic in order to restore <i>Z.noltii</i> using Roseliere device – Small to large scale methodology
DAY 3	SS14	P429	A. Croitoru	Testing seeding method using <i>Zostera noltii</i> seeds, in a recently nourished area of the Romanian Black Sea coast
DAY 3	SS14	P434	A. Dalmau Elorza	STORM-SHOOTS: a collaborative effort to carry out a pilot study to replant <i>Posidonia oceanica</i> shoots uprooted by storms
DAY 3	SS14	P528	M. De Luca	Restoration of a <i>Posidonia oceanica</i> meadow through plants harvested from a meadow to be destroyed by harbour extension works
DAY 3	SS14	P448	C. Del Deo	Garden Bed Installation for Seagrass Restoration
DAY 3	SS14	P459	F. Frau	Restoration of <i>Posidonia oceanica</i> meadows through metal stake technique and naturally detached cuttings in the "a Seaforest to Save the Planet" campaign
DAY 3	SS14	P476	L. Guerrero Masseguer	Evaluating the effects of auxin application on the transplantation of rhizome fragments of <i>Posidonia oceanica</i> in the marine environment
DAY 3	SS14	P445	C. Harper	Sands of Time: Sowing the Future for Upscaling Seed-Based Seagrass Restoration
DAY 3	SS14	P531	N. Hijner	Subtidal eelgrass restoration in lake Grevelingen, The Netherlands
DAY 3	SS14	P454	E. Keehner	Optimising Seed-based Seagrass Restoration in Nursery Conditions.
DAY 3	SS14	P478	M. Langley	Seagrass restoration trade-offs: comparing survival from beach-cast salvaged restoration materials to translocated fragments of <i>Posidonia australis</i>
DAY 3	SS14	P485	M. Lattuada	Planning restoration to ensure maximum shoot survival in <i>Zostera marina</i>

DAY 3	SS14	P493	R. Lilley	The Seagrass Consortium-a unique partnership between scientists, social entrepreneurs, tech firms and government officials to accelerate the scale and impact of seagrass restoration in Europe
DAY 3	SS14	P495	R. Maulidiyah	Early seed development and seedling survival under different seed-based restoration methods of the seagrass <i>Posidonia australis</i> and <i>Posidonia sinuosa</i>
DAY 3	SS14	P428	A. Nunez Garcia	A systematic quick scoping review: the state of knowledge regarding <i>Zostera</i> spp. restoration
DAY 3	SS14	P502	T. O Corcora	Investigating the potential for seed based restoration with <i>Zostera marina</i> in the German Baltic Sea
DAY 3	SS14	P449	C. O'Brien	Sowing the Seeds of Tomorrow: Scaling up Seagrass Restoration
DAY 3	SS14	P435	A. Ostrowski	Enhancing seagrass meadow resilience using seed-based restoration techniques
DAY 3	SS14	P479	M. Paul	Enabling authorities to grant seagrass restoration activities
DAY 3	SS14	P508	A. Piro	Growth of <i>Posidonia oceanica</i> seeds in mesocosms: ultrastructural analysis of early roots and associated microbial biofilms
DAY 3	SS14	P538	S. Rahmawati	Success story of a seagrass restoration: the importance of appropriate design and stakeholder engagement
DAY 3	SS14	P447	C. Robello	Seagrass transplantation success after a quarter of century in the Ligurian Sea (NW Mediterranean)
DAY 3	SS14	P524	L. Royo	Comparison of adult transplantation techniques for the Mediterranean seagrass <i>Posidonia oceanica</i>
DAY 3	SS14	P519	J. Schuster	Biodiversity recolonisation following restoration of <i>Zostera marina</i> seagrass meadows in the German Baltic Sea
DAY 3	SS14	P529	M. Sievers	When and where: how seascape context and site maturity influences animals in restored seagrass
DAY 3	SS14	P613	M. Simeone	<i>Posidonia oceanica</i> (L.) Delile restoration habitat in the Marine Protected Area Gaiola Underwater Park
DAY 3	SS14	P496	R. van Zummeren	Transplantation of <i>Zostera noltii</i> sods to establish seagrass meadows on newly nourished sediments as part of coastal development works in Romania
DAY 3	SS14	P464	J. Verduin	The influence of turbulent coherent structures on transport of <i>Amphibolis antarctica</i> seedlings accelerating seagrass restoration efforts
DAY 3	SS14	P527	M. Vogel	Developing knowledge and tools to upscale european seagrass restoration – insights of <i>Zostera noltii</i> transplantations at the Eastern Scheldt, Netherlands
DAY 3	SS14	P544	Y. Wilmerding	Establishment of <i>Zostera marina</i> tissue culture techniques for use in laboratory-based investigation of seagrass physiology
DAY 3	SS14	P426	A. Wookey	Assessing techniques to improve germination of Zosteraceae species
DAY 3	SS14	P467	J.L. Yanez	Assessment of seagrass restoration methods at Northern and Southern European coasts
DAY 3	SS14	P455	E. Yates	Understanding the best medium for planting eelgrass seeds



ISBW15 & WSC2024

NAPOLI, ITALY, JUNE 17TH TO JUNE 21ST, 2024